



Watching Video

Concrete Pump / Boom Pump

# ECP41CX-5

## Boom Type

5 section ZR folding

## Vertical Reach

41m

## Horizontal Reach

36.3m

## Depth Reach

27.7

## Delivery Pipe Diameter

125mm

## Slewing Range

360°

## Outrigger

X-extension (Front)

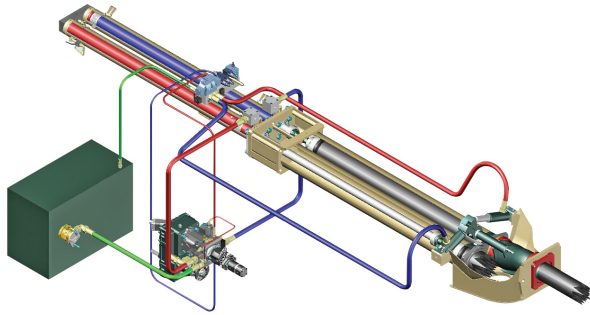
Swing-type (Rear)



**EVERDIGM**

# FFH SYSTEM (Free Flow Hydraulic)

This type of FFH Hydraulic Pressurized Systems combined with **Rexroth**® pumps and **Hawe**® boom control block is widely recognized to all over the world due to efficiency and stability. Currently Everdigm Pumps are applying these systems for longtime and widely known and also proven the products to everyone. Based on these facts FFH systems are used all over the world and mostly welcomed. Efficient pumps, less boom bouncing and less noise for while it operates. As above all, these reasons they are providing comfortable working area.




---

Direct connecting main pump and hydraulic cylinders  
improve pumping efficiency

---

Less peak pressure & less boom bouncing by peak  
pressure control

---

No need of big oil tank

Cut down maintenance cost

---

Applying suction filter

Prevent contamination in main pump

---

Centralized pumping controller

Easy access and maintenance

---

## FEATURES

### PUMPING UNIT

---

Closed-loop System

Inductive Proximity Switch with Indicator

Single Lip Concrete Piston

Hard-chromed Concrete Cylinders

---

### BOOM & STRUCTURE

---

Diagonal Extension Front Outrigger

Swing Rear Outrigger

Outrigger Pilot Check Valves

Hydraulic Motor and Gear at Boom Slewing

High Pressure End Hose (Both End Coupling, 3m)

Boom & Deck Pipe Dia. 125mm

Greasing Port on Boom Link and Pedestal

Bubble Gauge on each Side of Unit

Cleaning Port and Sponge Ball

Water Pump, Cleaning Hose, Water Tank

Outrigger Pads with Compartment

Night Light Kit on Pedestal

---

### HOPPER

---

EZ Clean Hopper with Hi Managanese Paddle

Auto Lubrication System for Hopper

600 liter Volume Hopper

S-tube 200mm to 180mm

Tungsten Carbide for Wear Ring and Plate

Night Light Kit for Hopper

---

### CONTROL KIT

---

Cable Remote Control (40m Cable)

Radio Remote Control, Proportional

Remote ON/OFF Pumping

Remote Engine ON/OFF

Infinite Variable RPM Control

Boom - Manual Control Block and Remote Control

Outrigger - Manual Control Block on each Side of Unit

E-stop and Horn Switch

Electric Control Box with Seperate Local Controller

Pneumatic Solenoid Valve for PTO Control

---

### OPTIONAL

---

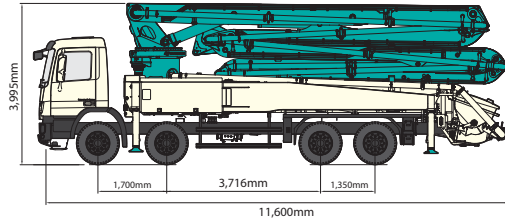
	Twin Wall Pipe
	Auto Lubrication
	Working Light
	One Side Support System
Outrigger	Rear Outrigger Auxiliary Fuel Tank
	Cover
Hopper	Safety Device
	Vibrator
	Aluminum Platform
Platform	Water Tank Heater
	Handrail on Rear Step
Paint	Customized Color

---

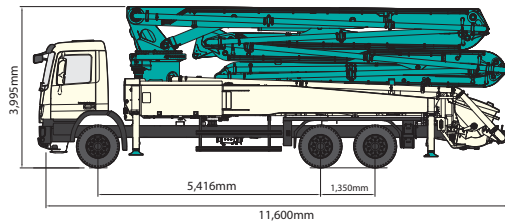
Note) For more optional item not mentioned above please consult the manufacture.

# SPECIFICATIONS

## DIMENSIONS



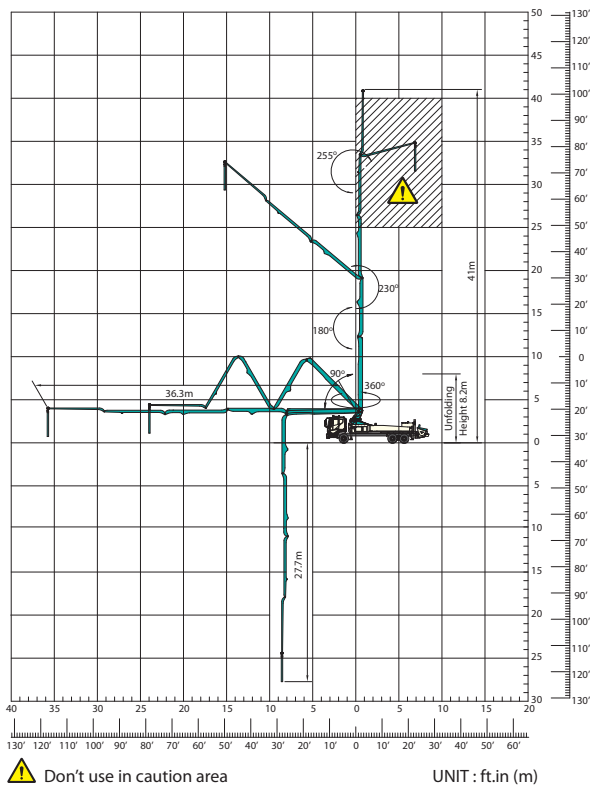
Front Axle Payload	12,037kg
Rear Axle Payload	18,103kg



Front Axle Payload	8,927kg
Rear Axle Payload	20,016kg

\* Weight and dimension figures here are subject to change on various chassis option and additional axle application etc.

## WORKING RANGE



## PUMP

Pump Cell	2114	2116
Hydraulic Control System	Closed Free Flow Hydraulic	
Hydraulic Main Pump	A4VG180	A4VG125HDx2 (Tandem)
Concrete Cylinder	Dia. 230mm Stroke 2,100mm	
Drive Cylinder	Tube Dia.230mm	Tube Dia. 230mm Stroke 2,100mm
Theoretical Concrete Output	140m <sup>3</sup> h	160m <sup>3</sup> h
Theoretical Concrete Pressure	70bar	85bar
Transfer Tube Type	S-tube, S2018 (Dia 200 to 180mm)	
Volume of Hopper	600L	

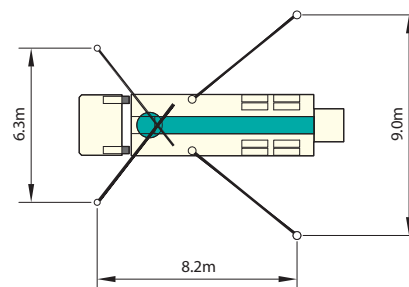
## BOOM

Boom Type	5 section ZR folding
Max. Vertical Reach	41m
Max. Horizontal Reach	36.3m
Max. Depth Reach	27.7m
Unfolding Height	8.2m
End Hose	3m
Delivery Pipe Dia.	125mm
Slewing Range	360deg.

## OUTRIGGER

Front Outrigger Type (Full Spreading Width)	Diagonal Extension (6.3m)
Rear Outrigger Type (Full Spreading Width)	Swing (9m)

## OUTRIGGER SPREAD



Note) Technical amendments are reserved. The specifications are subject to change with or without prior notice.

# EVERDIGM

EVERDIGM is large sized company with \$250M turnover providing customers across the world with its quality products. EVERDIGM has been working and growing based on the platform of advanced quality, professionalism and real satisfaction. Standing behind the customers taking responsibility at all stage its product life cycle is EVERDIGM's commitment.



## Build the Future

The spirit, "build the future", enables EVERDIGM to make a remarkable growth over 80 countries now. EVERDIGM offers the best value concrete pump which is key to build the brighter future for dealers and customers.

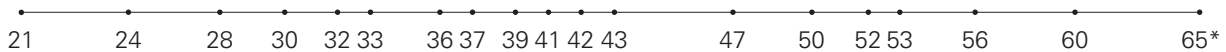
## Concrete Pump

- Free Flow Hydraulic System
- Boom Pump Ranging from 21M to 65M
- Placing Boom of Various Design
- High Pressure Trailer and Line Pump



### Truck Mounted Boom Pump Line-up (Max. Vertical Reach)

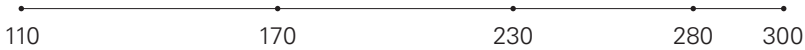
Unit : m



\*Plan to release in 2013

### Trailer Pump Line-up (Max. Concrete Pressure)

Unit : bar



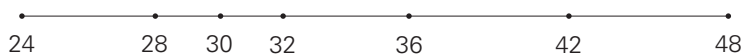
### Line Pump Line-up (Max. Concrete Pressure)

Unit : bar



### Placing Boom Line-up (Max. Horizontal Reach)

Unit : m



Distributed by

**Head Office & Factory**  
332-3, Janggwan-Ri, Jincheon-Eub, Chungcheongbuk-Do, Korea  
Tel\_+82-43-530-3300 Fax\_+82-43-530-3429

**Sales & Marketing Office**  
Room #1203, Woolim Lion's Valley 2, 680, Gasan-Dong, Geumcheon-Gu, Seoul, Korea  
Tel\_+82-2-801-0800 Fax\_+82-2-801-0899

@EVERDIGM Corp. Printed in Korea

