

EVERDIGM

TOP HAMMER DRILL RIGS ECD SERIES

EVERDIGM

EVERDIGM is large sized company with \$300M turnover manufacturing high-end Construction, Mining, and Special Purpose Vehicle in Korea. The products have been globally distributed and serviced in 90 countries through 140 distributors. EVERDIGM has been growing based on the platform of advanced quality, professionalism and real satisfaction. Standing behind the customers taking responsibility for its products at all of stage its product life cycle is always EVERDIGM's commitment.

TOTAL SOLUTION PROVIDER CREATING MORE VALUE FOR FUTURE GENERATION.

EVERDIGM's decision making is a reflection of 3 principles: Our family, Future generation's life, and Your satisfaction. We are not just a manufacturer of equipments, but we put greater emphasis on providing high quality equipments that suits your needs in any sites around the world and provide efficient after-sales service to support your business, as a World Top Class manufacturer.

With Mining and Rescue industries' and 'A faithful supporter to make a real satisfaction for customer, employee, and society'.

EVERDIGM will continue to share ideas with our customers and be ready to Innovate and Implement changes that will keep us flexible and efficient in dynamic market place.

HEAD OFFICE & FACTORY

49, Buyeong-gil, Jincheon-eup,
Jincheon-gun, Chungcheongbuk-do, Korea
TEL +82-43-530-3921 FAX +82-43-530-3470

SALES & MARKETING

Room#1203, WoolimLion'sValley2,
2 Gasan digital 1-ro, Geumcheon-gu, Seoul, Korea
TEL +82-2-801-0815 FAX +82-2-830-0799
Email angelica@everdigm.com

THD1403-01 Vol.01 01.AUG.2014 C 2014 EVERDIGM Corp. Printed in Korea

*Specifications contained in the catalogue may be changed without prior notice for improvement of quality and performance.



EVERDIGM ECD SERIES

MORE POWER TO YOU!

Everdigm top hammer drill rigs provide **supreme advantage** at construction sites.



Improved quality

- Productivity and Dependability.
- Powerful Drifter and Engine.
- POPS/FOPS Certified Cabin with User Friendly Control Panel.
- Serviceability and Longevity.
- Durability with Heavy Duty Parts.
- Easy Maintenance and Fuel Economy.



Advanced Technology

- Developing the product life cycle Management (PLM) system based on such as 3D design.
- Repeated simulation from design to production to reduce product design failure
- Utilizing highest level of quality control and manufacturing process
- Stress analysis simulation



World wide network

EVERDIGM Has wide network of professional service technicians spread in every corner of the world. They are only a local phone call away when you need help.

Support where it counts. On the job site!

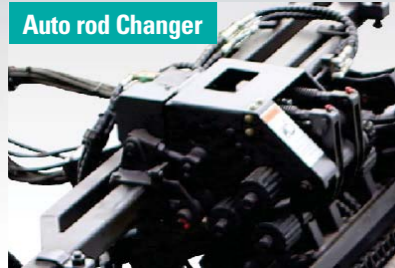


Support & committed service

- Customized Education Program
- Fast response and customer oriented attitude
- Giving practical solution working with major components company.
- Professional technicians and engineers with foreign language and drilling terminology



STANDARD FEATURES



Auto rod Changer

Unique, smooth & fast auto rod changer



Boom

1200mm extendable boom standard



Drifter

Everdigm's original designed rock drill



Cabin

ROPS & FOPS Certified cabin



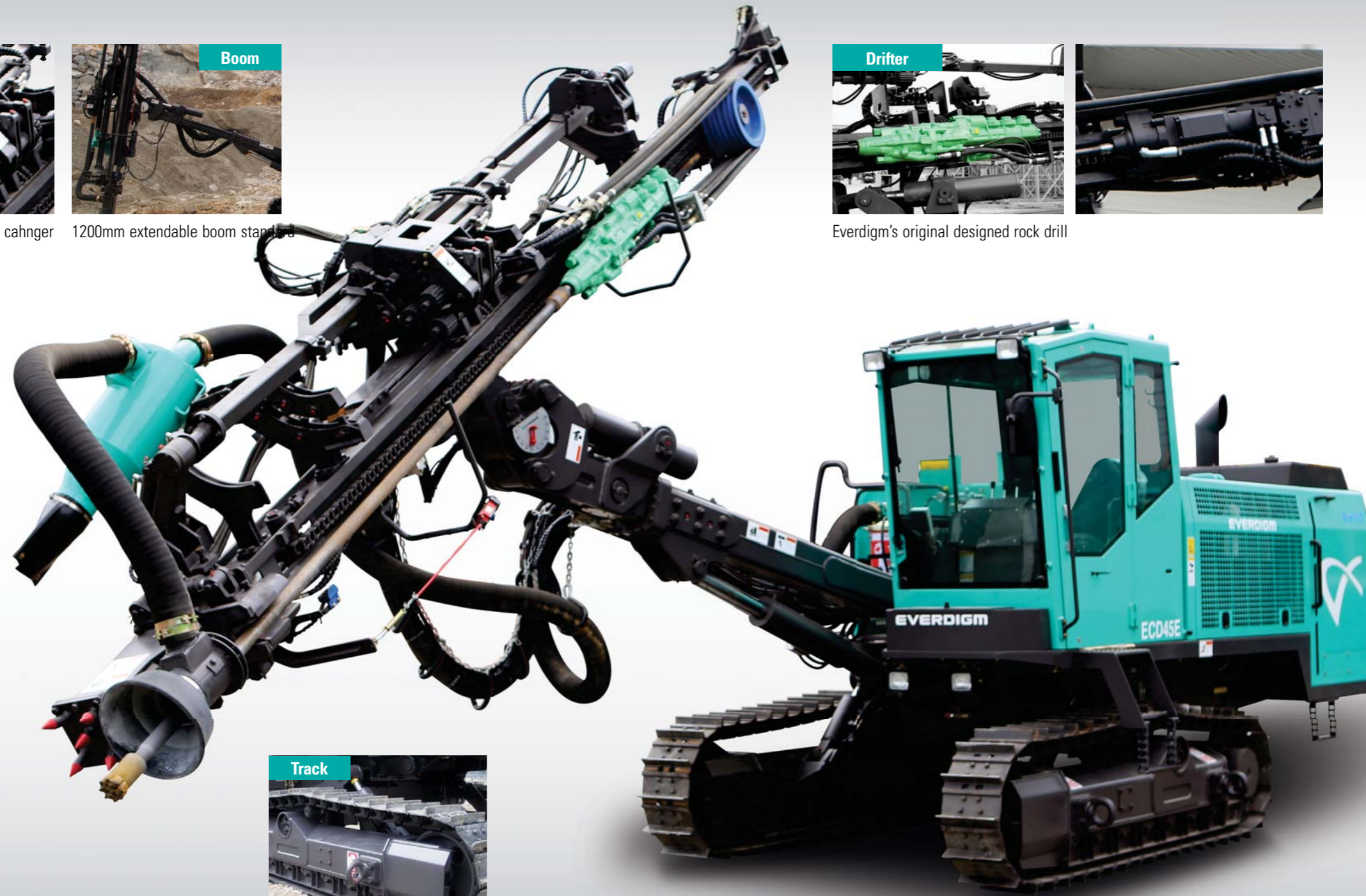
Water mist

Water mist on bit available (optional)



Pre-cleaner

Pre-cleaner standard



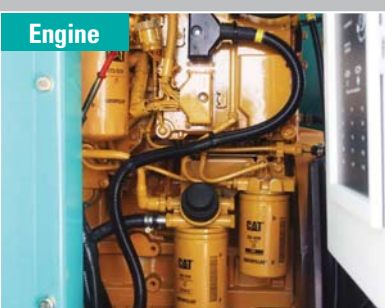
Track

Easy climbing track with long grouser.



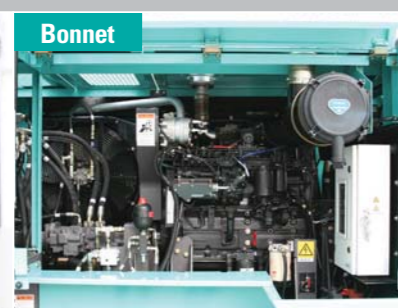
Dust collector

Strong dust collector with 6 filters.



Engine

CAT & CUMMINS available



Bonnet

Wide & easy to work



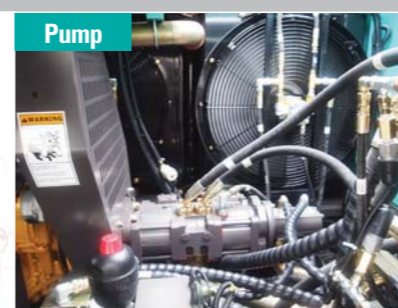
Air compressor

Wide & easy to work



MCP

Simple & less electrics



Pump

2 piston & 2 gear pumps



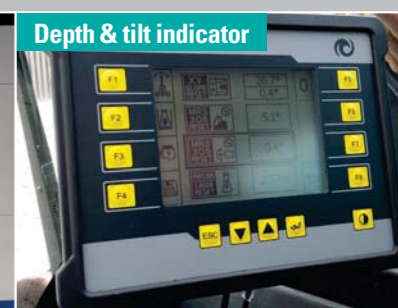
Lever

Easy to operate



GPS & GSM

Remote management available



Depth & tilt indicator

Efficient drilling support

EVERDIGM DRIFTER SERIES

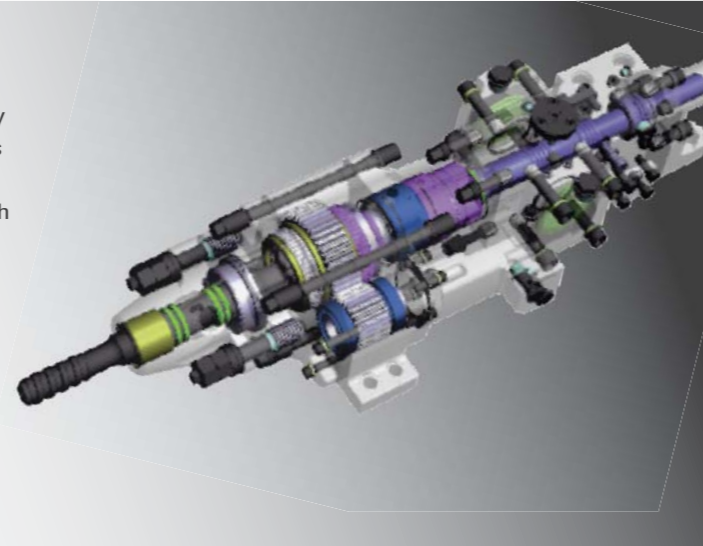
The powerful result is the EHD150, a robust and extremely reliable rock drill. Designed specifically for cost-efficient surface drilling. The EHD150 has been specially developed for surface operations, for efficient drilling of large holes at low cost.

Drifter (EHD SERIES)

EHD (Everdigm Hydraulic Drifter) series is newly developed, integral masterpiece of EVERDIGM's technology experience. It designed simply but intelligently, delivers high drilling performance with tremendous impact power.

Features and Benefits

- Ruggedized for surface drilling.
- Strong and Powerful.
- Easy of Operation and maintainance.
- Exceptional dependability.
- Service friendly.
- no rods left in the hole.

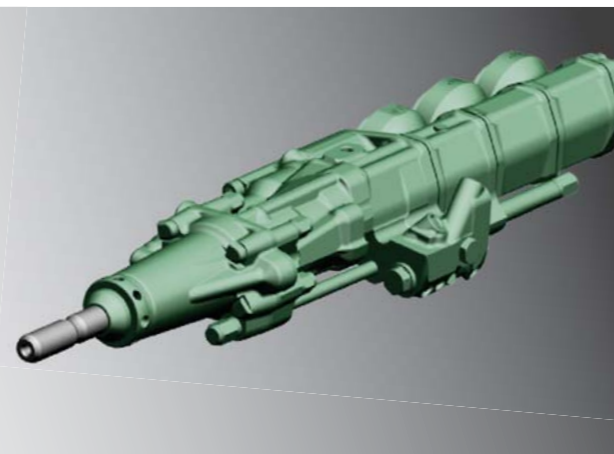


Drifter (HC150)

HC150 drifter made by Montabert is most preferred drifter among professional drillers with outstanding productivity and reliability. Count on proven drifter with maximum uptime. T51 rod option comes along with RP(Reverse Percussion) section as standard.

Features and Benefits

- Hyd. damping & reverse percussion
- Energy recovery valve system



Original technology of EVERDIGM Optional MONTABERT available

Item	ED150	EHD160	EHD185	EHD210	HC150
Base Rig	ECD35	ECD35	ECD40	ECD45	ECD45
Hole range	~89mm	~89mm	~102mm	~115mm	~127mm
Available Rod	T38	T38	T38 / T45	T45 / T51	T45 / T51
Impact power	15.9kW	16kW	18,5kW	21kW	21kW
Impact frequency	2600 Hz	3000Hz	3000Hz	3000Hz	2,500Hz
Rotation speed	200rpm	170bpm	170bpm	140bpm	130rpm
Hyd. damping	X	Std.	Std.	Std.	Std.
reverse Percussion	X	Std.	Std.	Std.	Std.
Weight	229kg	236kg	236kg	236kg	218kg
Length	953.5mm	1284.5mm	1284.5mm	1284.5mm	1,437mm



SUPPORT WHERE IT COUNTS. ON THE JOB SITE

Service is, of course, a matter of being available when something unexpected occurs.

Great Versatility

Operator safety and ergonomics contributes to our drill rigs' high long-term value. Simple and rugged, EVERDIGM also offers features such as angular and depth measurement, rotation and direction finder, all tailored to the customers' specific requirements.

From its very beginning, the line was never about just selling a machine that drills holes. It was always about the customer's profitability and machines that added value efficiently. We have engineered drill rigs with more operator comfort, fuel economy, and ease of maintenance in mind.

Serviceability and longevity

One of the greatest factors for customers is to have the least amount of downtime and to achieve this we have designed heavy duty parts, especially for harsh working conditions. All hydraulic hoses are heavy duty and exposed hoses are wrapped with a protector. The engine compartments boast big spaces, which makes for easy maintenance and all filters are located at easy reachable position for daily check-ups. The attention to detail leads to smoother drilling, directly contributing to increased productivity, as well as machine longevity.

SPECIFICATION

OPTION

1. Remote drill monitoring (GPS & GSM)
2. Depth & angle indicator
3. Centralized greasing system
4. Water misting system
5. Rear view camera
6. Triple grousers track



Item	ECD35
Boom	Single
Hole diameter	50 ~89mm (2" ~ 3.5")
Drill steel	T38, T45 (3,050mm)
Hole depth	18m
Rock drill	ED150 (15.9 kW), EHD160 (16 kW)
Engine	Tier 1 Cummins 6BT5.9 (119 kW, 160 hp)
Air compressor	5.4 m³/min (190 cfm) up to 10.5 bar
Dimension, transport	H 2860 mm x L 9165 mm x W 2686 mm
Weight	12,100kg

Item	ECD40
Boom	2 stage telescopic
Hole diameter	64 ~ 102mm (2.5" - 4")
Drill steel	T38, T45 (3,660mm)
Hole depth	21m
Rock drill	EHD185 (18.5 kW)
Engine	Tier 2 Cummins 6BTAA5.9 (130 kW, 174 hp) Tier 3 Caterpillar C7 (168 kW, 225 hp)
Air compressor	6 m³/min (211 cfm) up to 10.5 bar
Dimension, transport	H 2891 mm x L 9218 mm x W 2686mm
Weight	13,000 Kg

Item	ECD45
Boom	2 stage telescopic
Hole diameter	75 ~ 115mm (3" - 4.5") / 127mm (5")
Drill steel	T38, T45 (3,660mm)
Hole depth	21m
Rock drill	EHD210 (21 kW), HC150 (21 kW)
Engine	Tier 2 Cummins 6CTAA8.9C (153 kW, 205 hp) Tier 3 Caterpillar C7 (168 kW, 225 hp)
Air compressor	8 m³/min (282 cfm) up to 10.5 bar
Dimension, transport	H 2890 mm x L 9220 mm x W 2686 mm
Weight	13,600 Kg



MINING AND CONSTRUCTION DRILLING PRODUCTS

CORE DRILL RIGS

In exploration job, the machine becomes your partner taking all your request 24/7. The rig should be reliable and safe to handle rigorous conditions of the job site. As a true core drill rig, ECR12/18 can cope with the toughest conditions.

Features and Benefits

- Small footprint (9 ton only)
- Powerful (1,780 meter NQ)
- Easy Maintenance
- No Electrical Hassle



DTH DRILL RIGS

EVERDIGM Rock Drill guarantees the safety and quality at all construction sites. Easy maintenance and operation deliver satisfaction to customers. Strong drifter and engine power delivers faster, stronger, and satisfactory results

Features and Benefits

- Straight, accurate blast holes for controlled fragmentation.
- Strong and Powerful. - Easy of Operation and maintainance.
- A smart investment in power and precision.
- Steeper slopes mean better economy.



ROCK TOOLS

Everdigm offers a wide range of drilling tools suitable for a variety of drilling applications. Our higher performance drilling tools will bring you greater productivity.

Product line

- Tophammer Consumables
- Down the Hole Hammers Rocky series (2" - 32")
- Concentric Overburden system: DURA WING & DURA RING
- Reverse Circulation Hammers
- Cluster Drill

