

Concrete Pump / Boom Pump

ECP43CX-5



Boom Type

5 section RZ folding

Vertical Reach

43m

Horizontal Reach

38.1m

Depth Reach

29.8m

Delivery Pipe Diameter

125mm

Slewing Range

360°

Outrigger

Diagonal extension (Front)

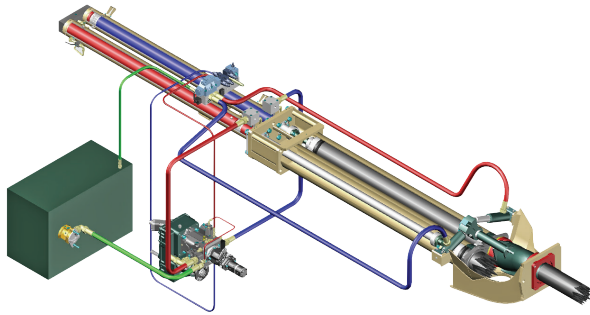
Swing-type (Rear)



EVERDIGM

FFH SYSTEM (Free Flow Hydraulic)

This type of FFH Hydraulic Pressurized Systems combined with **Rexroth**® pumps and **Hawe**® boom control block is widely recognized to all over the world due to efficiency and stability. Currently Everdigm Pumps are applying these systems for longtime and widely known and also proven the products to everyone. Based on these facts FFH systems are used all over the world and mostly welcomed. Efficient pumps, less boom bouncing and less noise for while it operates. As above all, these reasons they are providing comfortable working area.



Direct connecting main pump and hydraulic cylinders
improve pumping efficiency

Less peak pressure & less boom bouncing by peak
pressure control

No need of big oil tank

Cut down maintenance cost

Applying suction filter

Prevent contamination in main pump

Centralized pumping controller

Easy access and maintenance

FEATURES

PUMPING UNIT

- _____ Closed-loop Free Flow Hydraulic System
- _____ Inductive Proximity Switch and Indicator
- _____ Single Lip Concrete Piston
- _____ Hard-Chromed Concrete Cylinder

BOOM & STRUCTURE

- _____ 5 Stage RZ-Folding Boom
- _____ Diagonal Extension Front Outrigger (Two Stage)
- _____ Swing Rear Outrigger (One Stage)
- _____ Outrigger Pilot Check Valves
- _____ Hyd. Motor and Gear Type Boom Slewing
- _____ High Pressure End Hose (3m)
- _____ Boom & Deck Pipe Diameter 125mm
- _____ Greasing Port on Boom Link and Pedestal
- _____ Bubble Gauge on Both Side
- _____ Water Pump, Water Tank, Cleaning Hose and Spray Nozzle
- _____ Working Light on Pedestal and Platform

HOPPER

- _____ Easy Clean Type Hopper
- _____ Hi-Manganese Agitating Paddle
- _____ 600 Liter Volume Hopper
- _____ Hopper Outlet Diameter 180mm
- _____ S2018 Type S-tube (Dia.200-180mm)
- _____ Flap Elbow (Dia.180-150mm) with Cleaning Port
- _____ Reducing Pipe (150-125mm)
- _____ Tungsten Carbide Wear Ring and Plate
- _____ Hydraulic Agitator Motors on Both Side Hopper
- _____ Auto Lubrication
- _____ Working Light on Hopper

CONTROL KIT

- _____ Wire Remote Control (40m Cord)
- _____ Wireless Remote Control (Proportional)
- _____ Remote ON/OFF Pumping
- _____ Remote ON/FF Engine
- _____ Infinite Variable RPM Control
- _____ Boom Control Block
- _____ Outrigger Control Block on Both Side
- _____ Emergency Stop Switch
- _____ Electric Main Control Panel and Local Controller
- _____ Pneumatic Solenoid Valve Type PTO Control
- _____ Stroke Changeover Switch

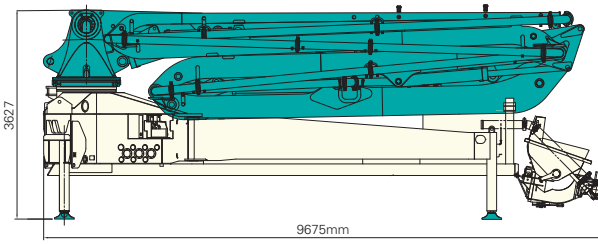
OPTIONAL

Boom	Twin Wall Pipe
	Auto Lubrication
	Working Light
	One Side Support (OSS) System
Outrigger	Rear Outrigger Auxiliary Fuel Tank
	Pipe Storage Bracket on One Side Rear Outrigger
Hopper	Cover
	Safety Device
	Central Manual Lubrication
Platform	Vibrator
	Aluminum Platform
	Handrail on Rear Step
Paint	Spare Tire Storage Bracket
	Customized Color

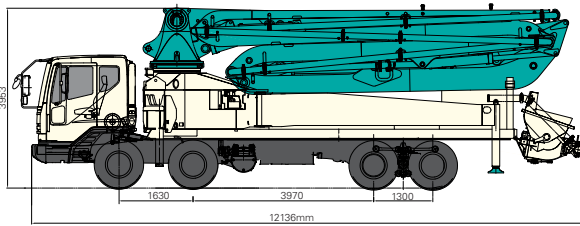
Note) For more optional item not mentioned above please consult the manufacture.

ECP43CX-5

DIMENSIONS



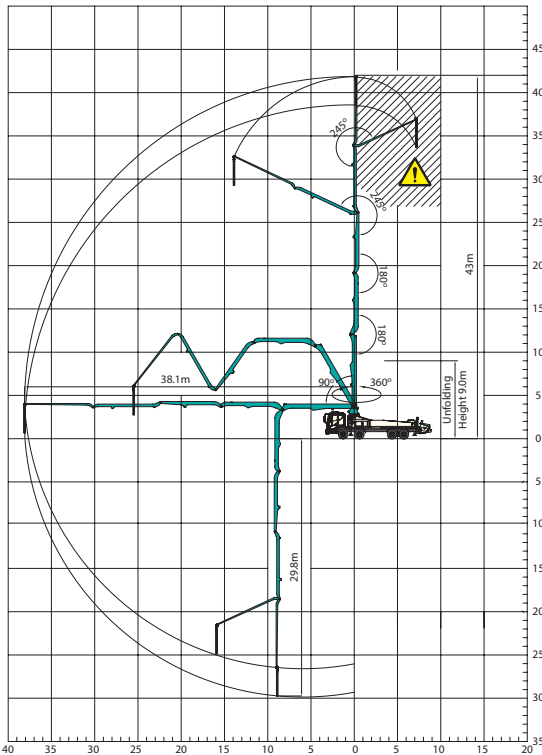
Pump Unit Weight	22,400kg
Water Tank Capacity	600liter



Front Axles Loading Weight	13,400kg
Rear Axles Loading Weight	19,600kg

* Weight and dimension figures here are subject to change on various chassis option and additional axle application etc.

WORKING RANGE



Don't use in caution area

UNIT : m

PUMP

Pump Cell	2114	2116
Control System	Closed Free Flow Hydraulic	
Main Pump	A4VG180	A4VG125X2
Concrete Cylinder (mm)	Dia.230	230
	Stroke 21,00	21,00
Drive Cylinder (mm)	Dia.130	140
	Stroke 21,00	21,00
Theoretical Concrete Output (m ³ /h)	140	160
Theoretical Concrete Pressure (bar)	70	85
Stroke No. (per minute)	26	30
Transfer Tube Type	S-Tube, S2018 (Dia. 200-181mm)	
Hopper Volume (liter)	600	600

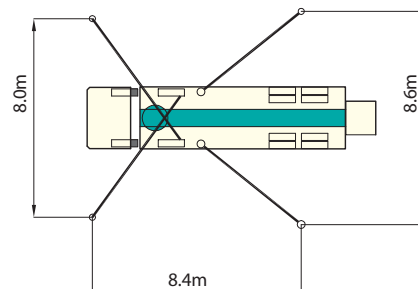
BOOM

Folding Type	5 Stage RZ-folding
Slewing Angle	360deg.
Max. Vertical Reach	43m
Max. Horizontal Reach	38.1m
Max. Depth Reach	29.8m
Unfolding Height	9m
End Hose Length	3m
Delivery Pipe Dia.	125mm

OUTRIGGER

Front Outrigger Type	Two Stage Diagonal Extension
	Full Spread Width 8m
Rear Outrigger Type	One Stage Swing-out
	Full Spread Width 8.6m

OUTRIGGER SPREAD



Note) Technical amendments are reserved. The specifications here are subject to change with or without prior notice.

EVERDIGM

EVERDIGM is large sized company with \$250M turnover providing customers across the world with its quality products. EVERDIGM has been working and growing based on the platform of advanced quality, professionalism and real satisfaction. Standing behind the customers taking responsibility at all stage its product life cycle is EVERDIGM's commitment.

Build the Future

The spirit, "build the future", enables EVERDIGM to make a remarkable growth over 80 countries now. EVERDIGM offers the best value concrete pump which is key to build the brighter future for dealers and customers.

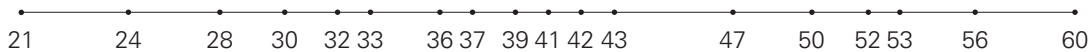
Concrete Pump

- Free Flow Hydraulic System
- Boom Pump Ranging from 21M to 60M
- Placing Boom of Various Design
- High Pressure Trailer and Line Pump



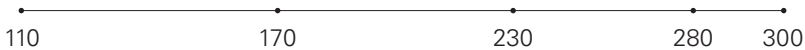
Truck Mounted Boom Pump Line-up (Max. Vertical Reach)

Unit : m



Trailer Pump Line-up (Max. Concrete Pressure)

Unit : bar



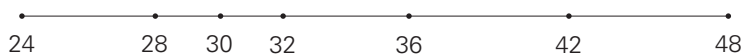
Line Pump Line-up (Max. Concrete Pressure)

Unit : bar



Placing Boom Line-up (Max. Horizontal Reach)

Unit : m



Distributed by

Head Office & Factory
332-3, Janggwan-Ri, Jincheon-Eub, Chungcheongbuk-Do, Korea
Tel_+82-43-530-3300 Fax_+82-43-530-3429

Sales & Marketing Office
Room #1203, Woolim Lion's Valley 2, 680, Gasan-Dong, Geumcheon-Gu, Seoul, Korea
Tel_+82-2-801-0800 Fax_+82-2-801-0899

@EVERDIGM Corp. Printed in Korea

