



Watching Video

Concrete Pumps / Boom Pumps

# ECP30CX-5

## Boom Type

5 section ZR folding

## Vertical Reach

30m

## Horizontal Reach

25.8m

## Depth Reach

19.7m

## Delivery Pipe Diameter

100mm

## Slewing Range

370°

## Outrigger

Diagonal extension (Front)

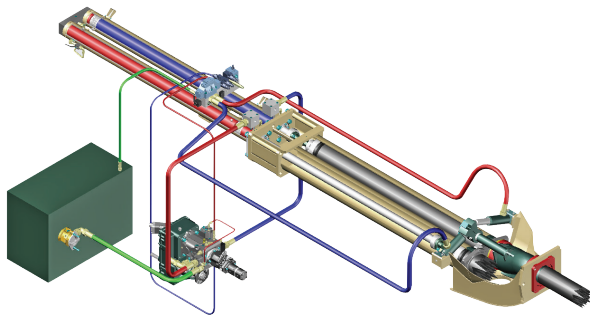
Telescopic (Rear)



**EVERDIGM**

# FFH SYSTEM (Free Flow Hydraulic)

This type of FFH Hydraulic Pressurized Systems combined with **Rexroth**<sup>®</sup> pumps and **Hawe**<sup>®</sup> boom control block is widely recognized to all over the world due to efficiency and stability. Currently Everdigm Pumps are applying these systems for longtime and widely known and also proven the products to everyone. Based on these facts FFH systems are used all over the world and mostly welcomed. Efficient pumps, less boom bouncing and less noise for while it operates. As above all, these reasons they are providing comfortable working area.




---

Direct connecting main pump and hydraulic cylinders improve pumping efficiency

---

Less peak pressure & less boom bouncing by peak pressure control

---

No need of big oil tank

Cut down maintenance cost

---

Applying suction filter

Prevent contamination in main pump

---

Centralized pumping controller

Easy access and maintenance

---

## FEATURES

### PUMPING UNIT

---

Closed-loop Free Flow Hydraulic System

---

Inductive Proximity Switch and Indicator

---

Single Lip Concrete Piston

---

Hard-Chromed Concrete Cylinder

---

### BOOM & STRUCTURE

---

5 Stage ZR-Folding Boom

---

Diagonal Extension Front Outrigger (One Stage)

---

Telescopic Rear Outrigger (One Stage)

---

Outrigger Pilot Check Valves

---

Rack Gear Cylinder Type Boom Slewing

---

High Pressure End Hose (2.5m)

---

Boom & Deck Pipe Diameter 100mm

---

Greasing Port on Boom Link and Pedestal

---

Bubble Gauge on Both Side

---

Hinged Type Side Plates on Platform

---

Water Pump, Water Tank, Cleaning Hose and Spray Nozzle

---

Working Light on Pedestal and Platform

---

### HOPPER

---

Easy Clean Type Hopper

---

Hi-Manganese Agitating Paddle

---

400 Liter Volume Hopper

---

Hopper Outlet Diameter 125mm

---

S2012 Type S-tube (Dia.200-125mm)

---

Flap elbow (Dia.125mm) on hopper outlet

---

Reducing Pipe (Dia.125-100mm)

---

Tungsten Carbide Wear Ring and Plate

---

Single Agitator Motor

---

Auto Lubrication

---

Working Light on Hopper

---

### CONTROL KIT

---

Wire Remote Control (40m Cord)

---

Wireless Remote Control (Proportional)

---

Remote ON/OFF Pumping

---

Remote ON/FF Engine

---

Infinite Variable RPM Control

---

Boom Control Block

---

Outrigger Control Block on Both Side

---

Emergency Stop Switch

---

Electric Main Control Panel and Local Controller

---

Pneumatic Solenoid Valve Type PTO Control

---

Stroke Changeover Switch

---

### OPTIONAL

---

Boom	Auto Lubrication
	Working Light

---

Outrigger	Outrigger Pads and Compartment
	Cover

---

Hopper	Safety Device
	Central Manual Lubrication
	Vibrator

---

Platform	Handrail on Rear Step
	Spare Tire Storage Bracket

---

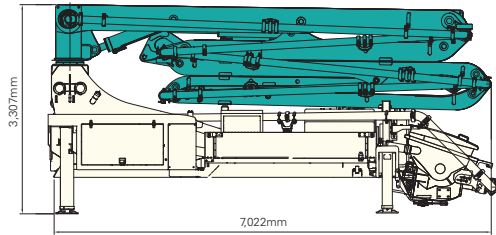
Paint	Customized Color
-------	------------------

---

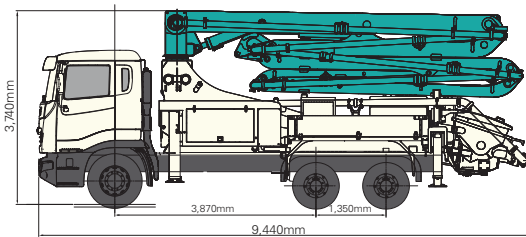
Note) For more optional item not mentioned above please consult the manufacture.

# SPECIFICATIONS

## DIMENSIONS



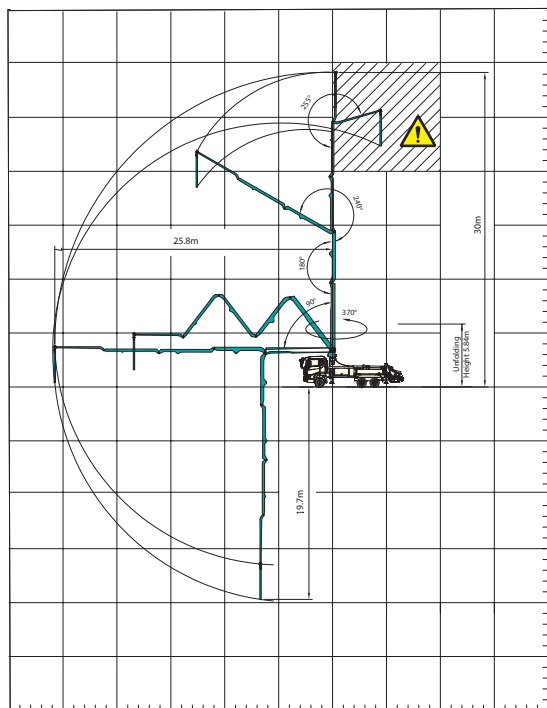
Pump unit Weight	12,500kg
Water Tank Capacity	400liter



Front Axle Loading Weight	6,300kg
Rear Axles Loading Weight	13,800kg

\* Weight and dimension figures here are subject to change on various chassis option and additional axle application etc.

## WORKING RANGE



⚠ Don't use in caution area

UNIT : m

## PUMP

Pump Cell	1609
Control System	Closed Free Flow Hydraulic
Main Pump	A4VG125
Concrete Cylinder (mm)	Dia.200 Stroke 1,600
Drive Cylinder (mm)	Dia.110 Stroke 1,600
Theoretical Concrete Output (m <sup>3</sup> /h)	70
Theoretical Concrete Pressure (bar)	90
Stroke No. (per minute)	25
Transfer Tube Type	S-Tube, S2012 (Dia. 200-125mm)
Hopper Volume (liter)	400

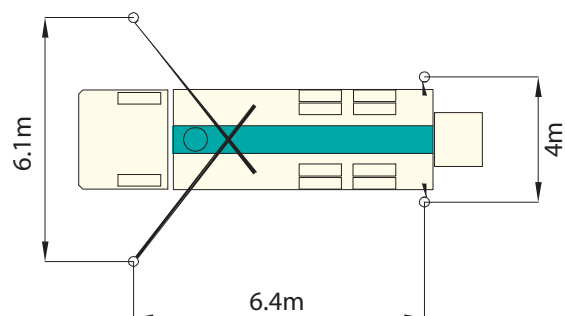
## BOOM

Folding Type	5 Stage ZR-folding
Slewing Angle	370
Max. Vertical Reach	30m
Max. Horizontal Reach	25.8m
Max. Depth Reach	19.7m (incl. End Hose 2.5m)
Unfolding Height	5.84m
End Hose Length	2.5m
Delivery Pipe Dia.	100mm

## OUTRIGGER

Front Outrigger	One Stage Diagonal Extension Full Spread Width 6.1m
Rear Outrigger Type	One Stage Telescopic Full Spread Width 4m

## OUTRIGGER SPREAD



Note) Technical amendments are reserved. The specifications are subject to change with or without prior notice.

# EVERDIGM

EVERDIGM is large sized company with \$250M turnover providing customers across the world with its quality products. EVERDIGM has been working and growing based on the platform of advanced quality, professionalism and real satisfaction. Standing behind the customers taking responsibility at all stage its product life cycle is EVERDIGM's commitment.



## Build the Future

The spirit, "build the future", enables EVERDIGM to make a remarkable growth over 80 countries now. EVERDIGM offers the best value concrete pump which is key to build the brighter future for dealers and customers.

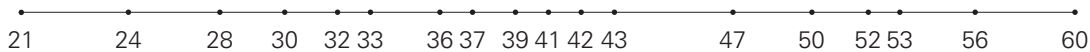
## Concrete Pump

- Free Flow Hydraulic System
- Boom Pump Ranging from 21M to 60M
- Placing Boom of Various Design
- High Pressure Trailer and Line Pump



### Truck Mounted Boom Pump Line-up (Max. Vertical Reach)

Unit : m



### Trailer Pump Line-up (Max. Concrete Pressure)

Unit : bar



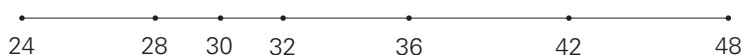
### Line Pump Line-up (Max. Concrete Pressure)

Unit : bar



### Placing Boom Line-up (Max. Horizontal Reach)

Unit : m



Distributed by

**Head Office & Factory**  
332-3, Janggwan-Ri, Jincheon-Eub, Chungcheongbuk-Do, Korea  
Tel\_+82-43-530-3300 Fax\_+82-43-530-3429

**Sales & Marketing Office**  
Room #1203, Woolim Lion's Valley 2, 680, Gasan-Dong, Geumcheon-Gu, Seoul, Korea  
Tel\_+82-2-801-0800 Fax\_+82-2-801-0899

@EVERDIGM Corp. Printed in Korea

